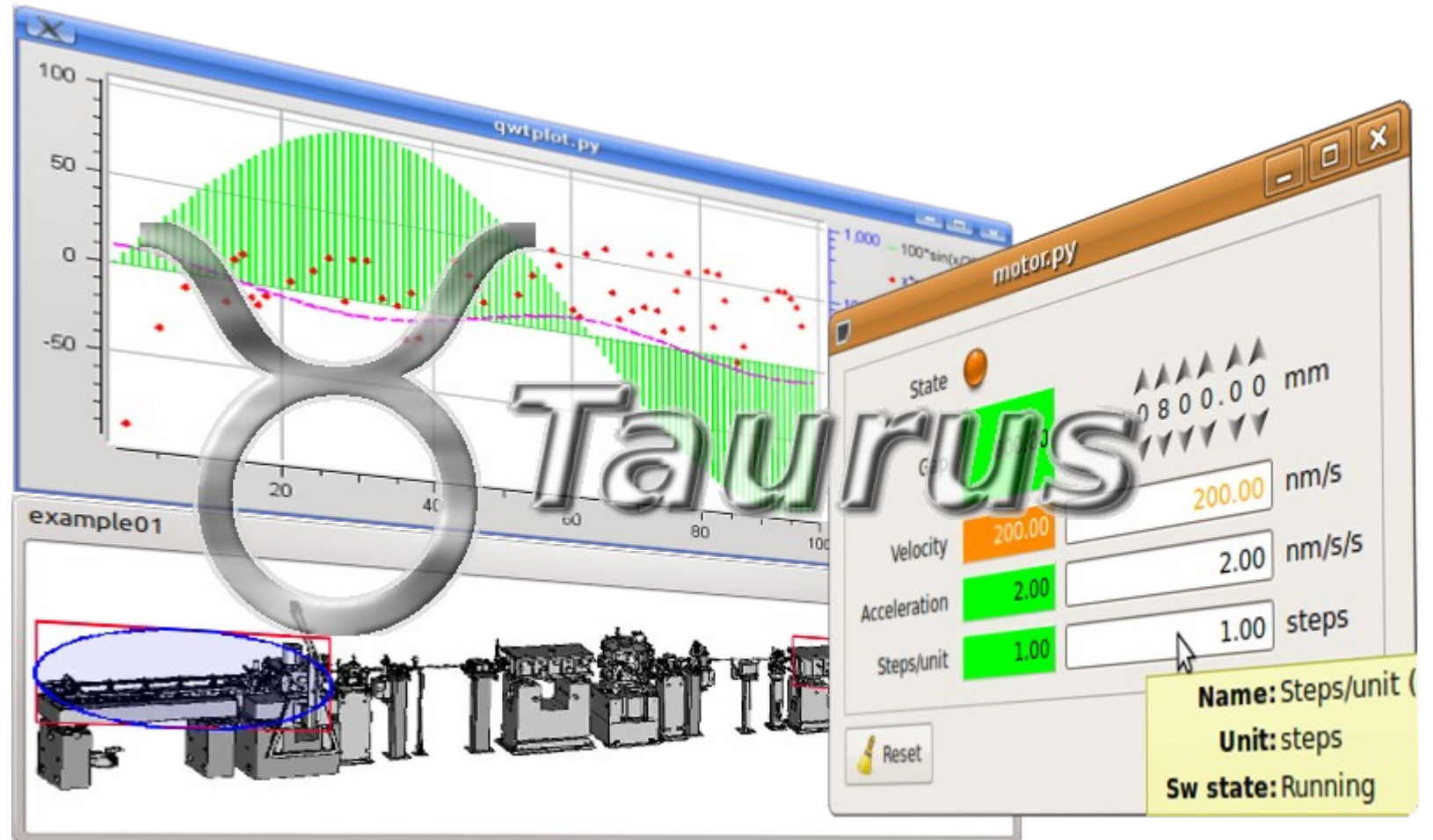




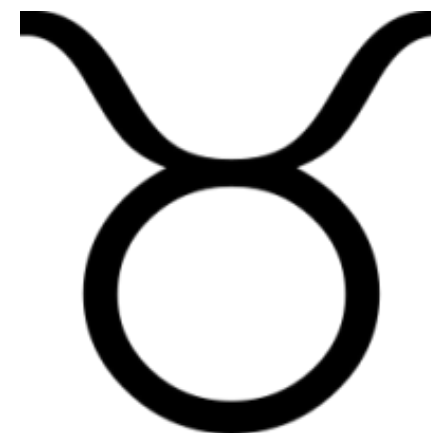
Emilio Morales  
Jose A. Ramos  
Zbigniew Reszela  
Sergi Rubio-Manrique  
Oriol Vallcorba

# Taurus 2D Plot



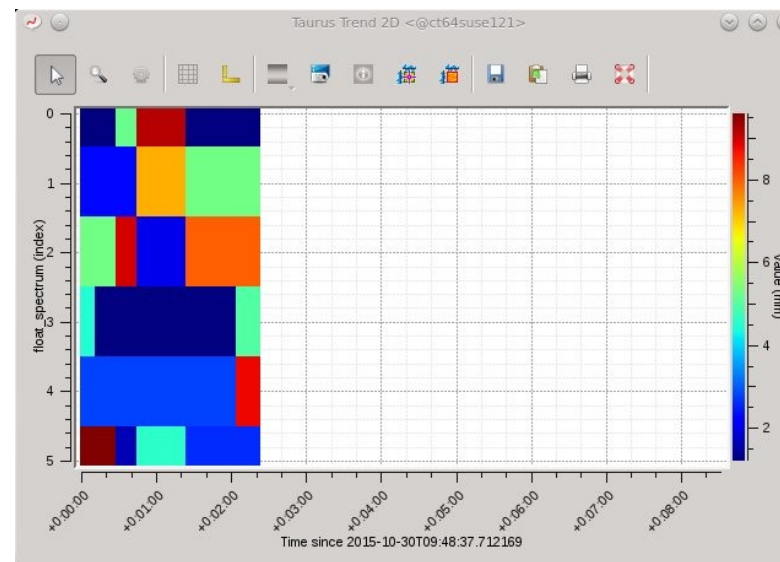
# Index

- Introduction
- Available widgets
- Migration - plotpy
- Work in progress
- Proposals?
- Questions



# Introduction

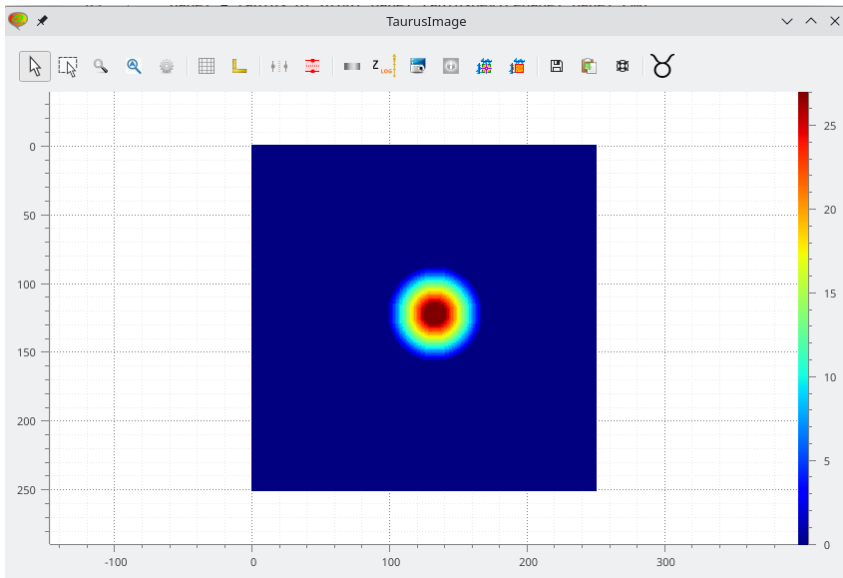
- Taurus offers a catalog of 2D widgets.
- Represent diverse kind of data:
  - Images
  - Heatmaps
  - Spectrograms
  - ...
- Using legacy guiqwt Widgets
  - Not maintained anymore.
  - Unify plotting tools like taurus-pyqtgraph



TaurusTrend2D. Credits: [Taurus](#)

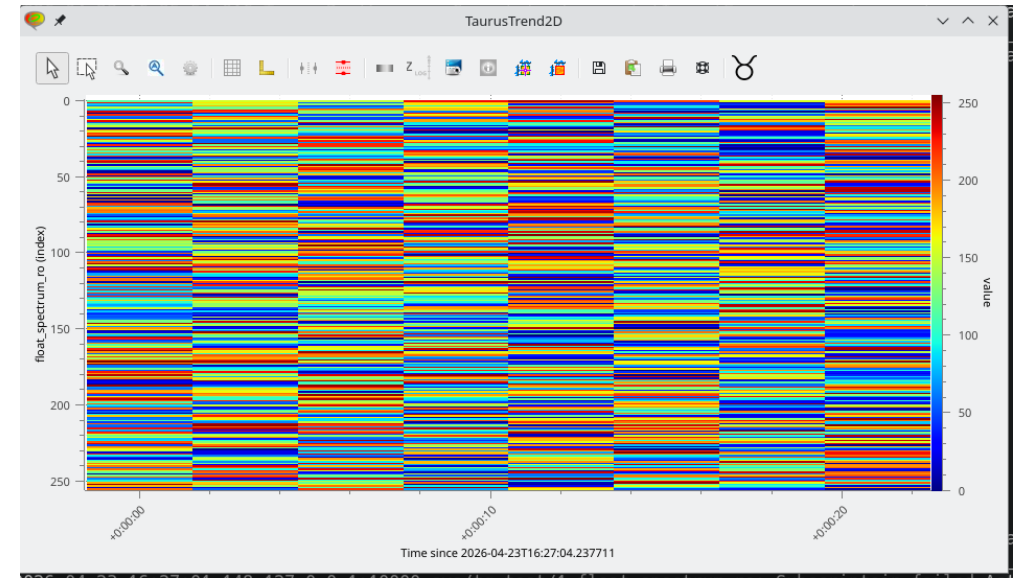
# Available Widgets

## TaurusImage



Designed to show image attrs,  
generating contour plots.  
Zooming, panning, color maps, cross  
axis regions,...

## TaurusTrend2D



Designed to show temporal evolution of 1D  
attrs.

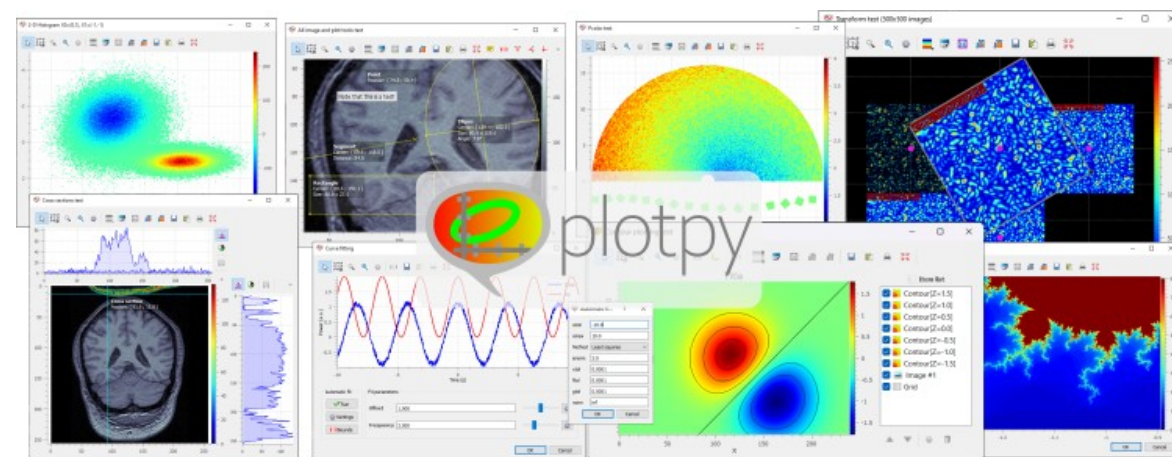
X axis → timestamps

Y axis → index inside the 1D array

Color → the value

# Migration – plotpy

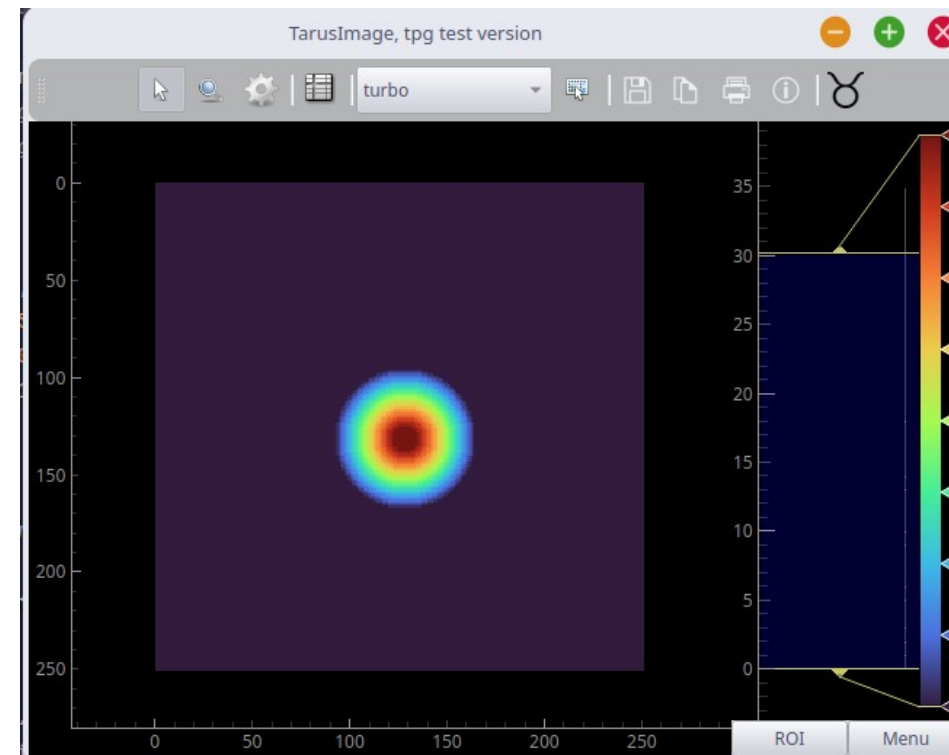
- Migrated to plotpy since 5.4.0
- “Use the same API”
- Not much effort to migrate it.
- Offer a maintained alternative to guiqwt library



PlotPy Widgets. Credits: [Plotpy](#)

# Work in progress

- Migrating widgets to taurus-pyqtgraph.
- Unify plot catalog.
- Use plug-in schema for plot.
- Two options:
  - Deprecate plotpy.
  - Maintain plotpy widgets as an independent plugin.



# Proposals



Question mark. Credits: [Wikimedia](#)

# Questions



Question mark. Credits: [Wikimedia](#)