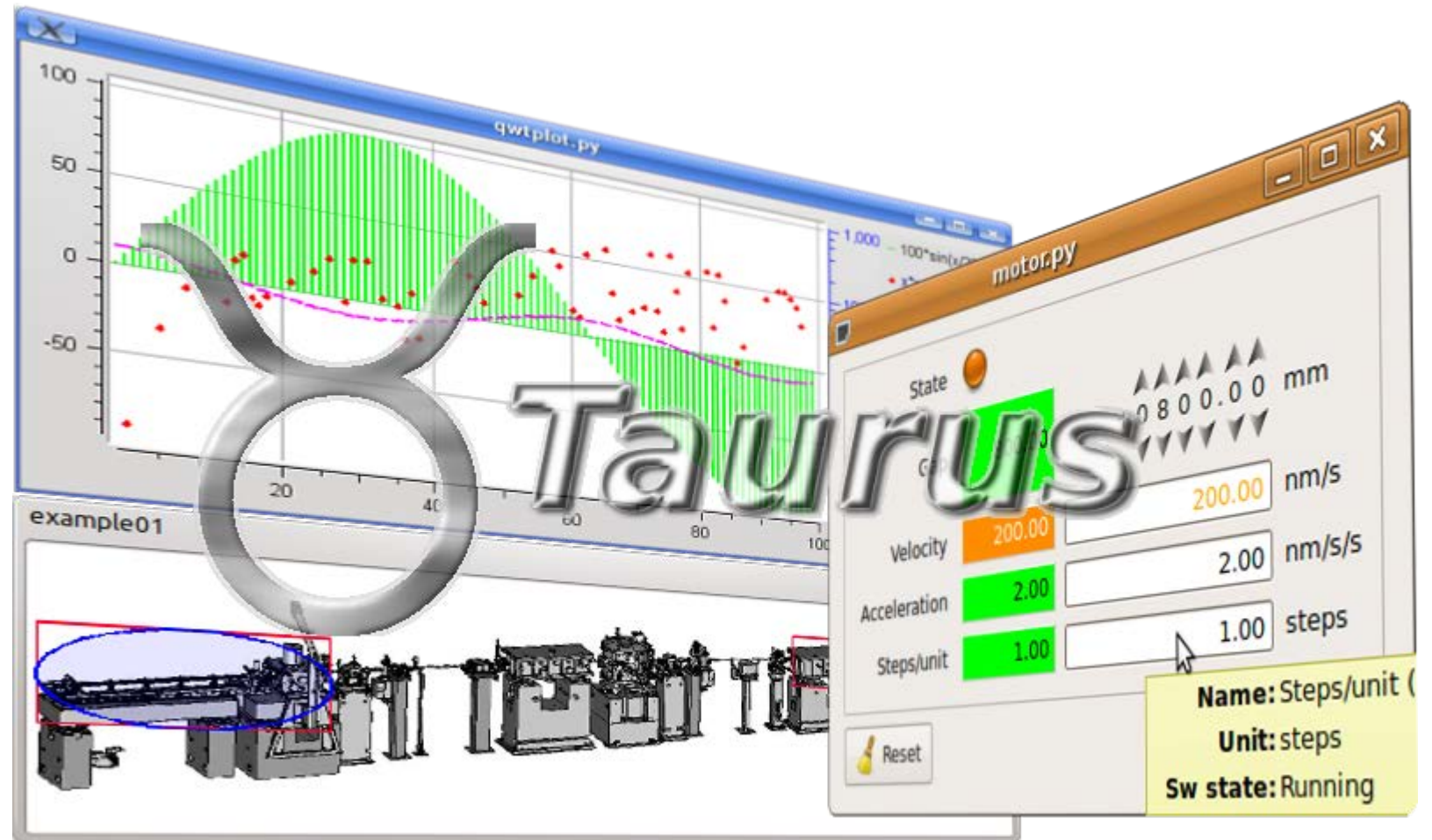




Emilio Morales
Jose A. Ramos
Zbignew Reszela
Sergi Rubio-Manrique
Oriol Vallcorba

Taurus Designer



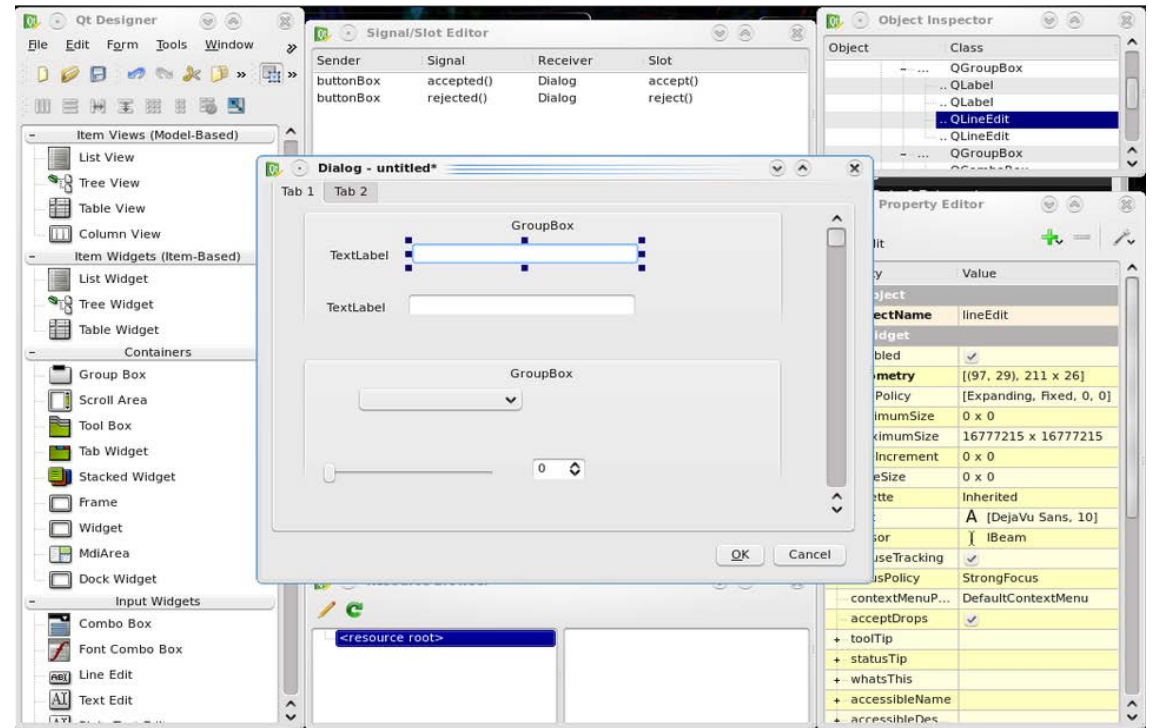
Index

- Introduction
- What is Taurus Designer?
- Guide to Designer
- Available widgets
- Questions



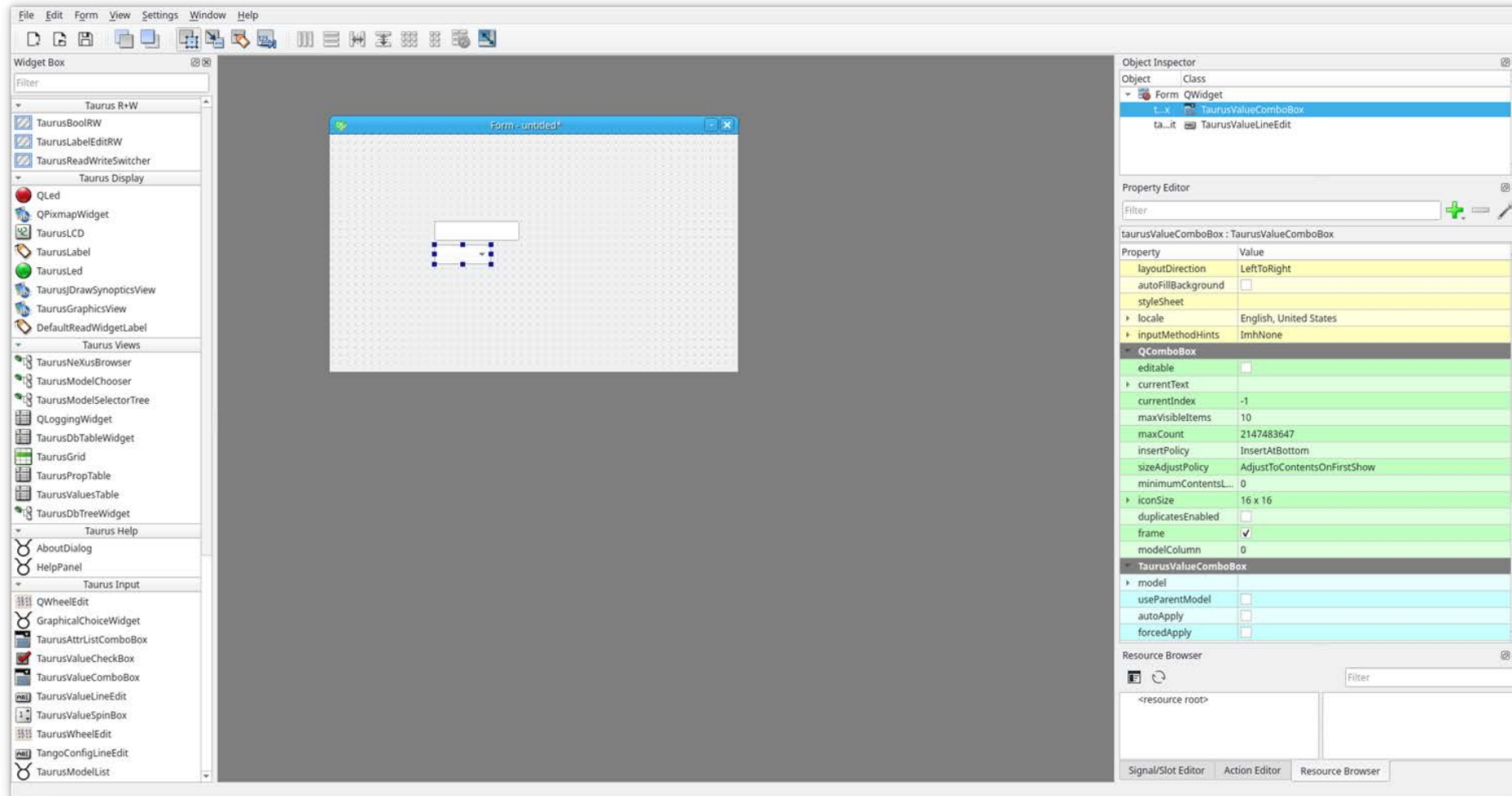
Introduction

- Exists as standalone application.
- Integrated inside [QtCreator](#).
- Tool for designing and building graphical user interfaces (GUIs) from Qt widgets.
- Easy to use.
- Fast prototyping.
- Expert and not expert users.



Qt Designer. Credits: [Wikimedia](#)

What is Taurus Designer?



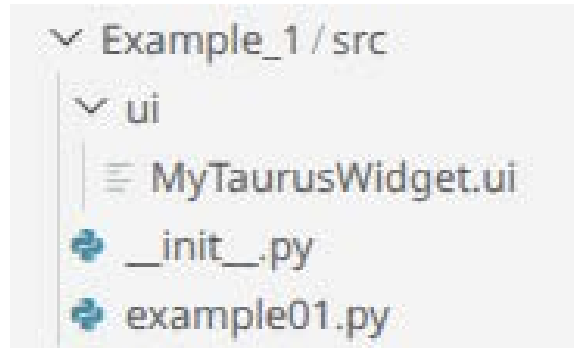
What is Taurus Designer?

- Qt Designer with taurus widgets.
- Almost all Qt taurus widgets integrated inside platform and available to users.
- You can load your widgets using [taurus.qt.qtgui.UILoadable\(\)](#)
 - Details at [TEP11](#)
- Nowadays there are known problems: [explained here.](#)

Guide to Taurus Designer

The screenshot displays the Taurus Designer interface. On the left is a widget palette with categories: Taurus R+W (TaurusBoolRW, TaurusLabelEditRW, TaurusReadWriteSwitcher), Taurus Display (QLed, QPixmapWidget, TaurusLCD, TaurusLabel, TaurusLed, TaurusJDrawSynoptics, TaurusGraphicsView, DefaultReadWidgetLabel), and Taurus Views (TaurusNexusBrowser, TaurusModelChooser, TaurusModelSelectorTree, QLoggingWidget, TaurusDbTableWidget, TaurusGrid, TaurusPropTable, TaurusValuesTable). A 'TaurusLed' widget is highlighted in the palette. The central canvas shows a window titled 'Form - MyTaurusWidge...' containing a table with three rows of data: '0.00' and '0.00', '0.00' and '161.11', and 'True' and 'True'. On the right, the properties panel shows settings for 'TaurusLabel', including 'model' (sys/tg_test/1/ampli), 'fgRole' (rvalue), 'bgRole' (quality), and 'autoTrim' (checked). Below the properties panel is a 'Resource Browser' showing '<resource root>'. A small tooltip 'A TaurusLed' is visible over the widget palette.

Guide to Taurus Designer



```
"""Minimal Taurus widget example loaded from a Qt Designer `.ui` file."""
```

```
import sys
```

```
from taurus.external.qt import Qt
from taurus.qt.qtgui.application import TaurusApplication
from taurus.qt.qtgui.util.ui import UILoadable
```

```
@UILoadable
```

```
class MyTaurusWidget(Qt.QWidget):
```

```
    """Simple widget that loads the Designer form at startup."""
```

```
    def __init__(self, parent=None):
```

```
        super().__init__(parent)
```

```
        self.loadUi()
```

```
def main():
```

```
    """Start the Taurus application and show the example widget."""
```

```
    app = TaurusApplication()
```

```
    widget = MyTaurusWidget()
```

```
    widget.show()
```

```
    sys.exit(app.exec_())
```

```
if __name__ == "__main__":
```

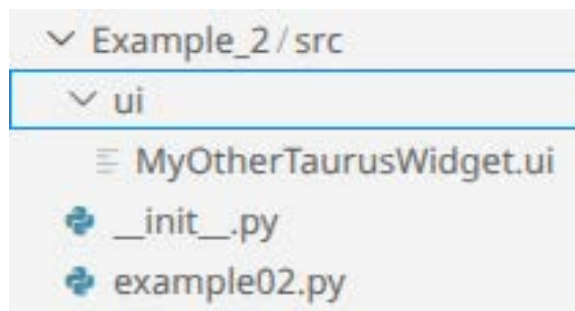
```
    main()
```

Guide to Taurus Designer

The screenshot displays the Taurus Designer environment. On the left is a widget palette with categories: Taurus R+W (TaurusBoolRW, TaurusLabelEditRW, TaurusReadWriteSwitcher), Taurus Display (QLed, QPixmapWidget, TaurusLCD, TaurusLabel, TaurusLed, TaurusJDrawSynopticsView, TaurusGraphicsView, DefaultReadWidgetLabel), and Taurus Views (TaurusNeXusBrowser, TaurusModelChooser, TaurusModelSelectorTree, QLoggingWidget, TaurusDbTableWidget). The central canvas shows a window titled 'Form - MyOtherTaurus...' containing a form with three input fields, the top one containing '0.00'. On the right, the property inspector shows settings for 'TaurusLabel', including alignment, word wrap, margin, indent, openExternalLinks, and model-related properties like useParentModel, modelIndex, prefixText, suffixText, fgRole, bgRole, autoTrim, dragEnabled, textInteractionFlags, and buddy.

sharedContents	<input type="checkbox"/>
alignment	AlignRight, AlignVCenter
Horizontal	AlignRight
Vertical	AlignVCenter
wordWrap	<input type="checkbox"/>
margin	0
indent	-1
openExternalLinks	<input type="checkbox"/>
TaurusLabel	
▶ model	
useParentModel	<input type="checkbox"/>
▶ modelIndex	
▶ prefixText	
▶ suffixText	
▶ fgRole	rvalue
▶ bgRole	quality
autoTrim	<input checked="" type="checkbox"/>
dragEnabled	<input type="checkbox"/>
textInteractionFlags	NoTextInteraction
buddy	

Guide to Taurus Designer



```
"""Taurus widget example that assigns Tango models from Python code."""
```

```
import sys
```

```
from taurus.external.qt import Qt
from taurus.qt.qtgui.application import TaurusApplication
from taurus.qt.qtgui.util.ui import UILoadable
```

```
@UILoadable
```

```
class MyOtherTaurusWidget(Qt.QWidget):
    """Widget that loads a blank Designer form and binds its models in code."""
```

```
def __init__(self, parent=None):
    super().__init__(parent)
    self.loadUi()
    self.populate_widgets()
```

```
def populate_widgets(self):
    """Attach Tango attribute models to the Taurus widgets."""

    self.tvle_1.setModel("sys/tg_test/1/ampli")
    self.tl_1.setModel("sys/tg_test/1/ampli")
    self.tvle_2.setModel("sys/tg_test/1/double_scalar")
    self.tl_2.setModel("sys/tg_test/1/double_scalar")
    self.tvle_3.setModel("sys/tg_test/1/boolean_scalar")
    self.tl_3.setModel("sys/tg_test/1/boolean_scalar")
```

```
def main():
    """Start the Taurus application and show the populated example widget."""

    app = TaurusApplication()
    widget = MyOtherTaurusWidget()
    widget.show()
    sys.exit(app.exec_())
```

```
if __name__ == "__main__":
    main()
```

Questions?



Question mark. Credits: [Wikimedia](#)